

9

THEY DON'T KNOW

(2/11/02 down half step w/corr.)
(4/02)

CUE: RUTH: "Don't wait up Meersie (doors slam)

Think "Grinch," slinky

A $\text{♩} = 113$

MRS. MEERS:

3 *mf* 4 3

They don't know— my flair for— the dra - ma - tic.

5 6 3

Not a clue,— the ta - lent I pos-sess.

7

3 8 9

Pret-ty girls,— but not much in— at - tic. Face to face with gen-ius,

(Spoken) 10 3 11 12 (optional) -----

and they'll ne - ver guess. (They'll ne - ver guess)

13 14 3

They don't know— they're star - ing at an art - ist

15 (MRS. MEERS:) 16 3

Musical notation for measures 15 and 16. Measure 15 starts with a treble clef, a key signature of two flats (B-flat and E-flat), and a common time signature. It contains a quarter rest followed by a quarter note G4, a quarter note F4, and a quarter note E4. Measure 16 contains a quarter note D4, a quarter note C4, a quarter note B3, and a quarter note A3. A triplet of eighth notes (G4, F4, E4) is marked above the final measure.

high - ly trained — to take on an - y role.

17 18 19

Musical notation for measures 17, 18, and 19. Measure 17 contains a quarter note G4, a quarter note F4, and a quarter note E4. Measure 18 contains a quarter note D4, a quarter note C4, and a quarter note B3. Measure 19 contains a quarter note A3, a quarter note G3, and a quarter note F3. A triplet of eighth notes (G4, F4, E4) is marked above the final measure.

Skill - ful mime and bril-liant laun-dry car-tist. seek-ing re-tri-bu-tion

20 21 3

Musical notation for measures 20 and 21. Measure 20 contains a quarter note G4, a quarter note F4, and a quarter note E4. Measure 21 contains a quarter note D4, a quarter note C4, and a quarter note B3. A triplet of eighth notes (G4, F4, E4) is marked above the final measure.

for the life they stole. I

22 23

Musical notation for measures 22 and 23. Measure 22 contains a quarter note G4, a quarter note F4, and a quarter note E4. Measure 23 contains a quarter note D4, a quarter note C4, and a quarter note B3. There are 'x' marks above the notes in measure 23.

al - most act - ed Chek - hov, Ib - sen, Shaw, Mo - liere. I

24 25 3

Musical notation for measures 24 and 25. Measure 24 contains a quarter note G4, a quarter note F4, and a quarter note E4. Measure 25 contains a quarter note D4, a quarter note C4, and a quarter note B3. A triplet of eighth notes (G4, F4, E4) is marked above the final measure.

al - most starred as Pe - ter Pan; i - ma - gine moi mid - air! I

Straight 8's

Swing

26 27 3

Musical notation for measures 26 and 27. Measure 26 contains a quarter note G4, a quarter note F4, and a quarter note E4. Measure 27 contains a quarter note D4, a quarter note C4, and a quarter note B3. A triplet of eighth notes (G4, F4, E4) is marked above the final measure.

al - most tack - led Shake - speare, a blush - ing Ju - li - et, and

28 29 3 (To 34)

Musical notation for measures 28 and 29. Measure 28 contains a quarter note G4, a quarter note F4, and a quarter note E4. Measure 29 contains a quarter note D4, a quarter note C4, and a quarter note B3. A triplet of eighth notes (G4, F4, E4) is marked above the final measure. The notation ends with a double bar line and a key signature change to two sharps (F# and C#).

if the house were big e-nough, I still could play her yet!

34

(MRS. MEERS:)



They don't know— I'm hot-ter news— than Du - se,



Hel - en Hayes— and Bern - hardt all in one.—



They're on top,— and I look like the los - uh.



Wait and see who's stand - ing when my play is done.

43



So wel - come all ye bright, young lad - ies, you're check - ing in - to

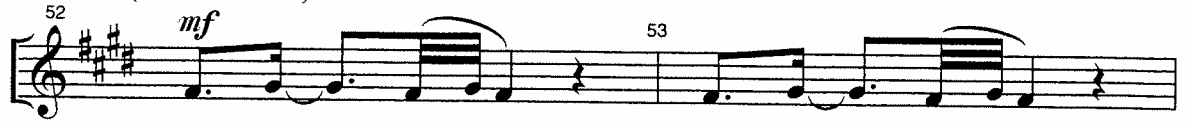


Ho - tel Ha - des. I won't stand by while crit - ics praise 'ya,



You're get - ting shipped to south - east As - ia! But

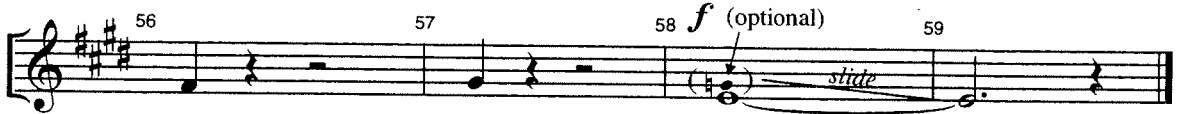
(MRS. MEERS:)



they don't know. They don't know.



Sad to be all a - lone in the world, but



they don't know!

Applause segue

9A

THEY DON'T KNOW PLAYOFF

TACET